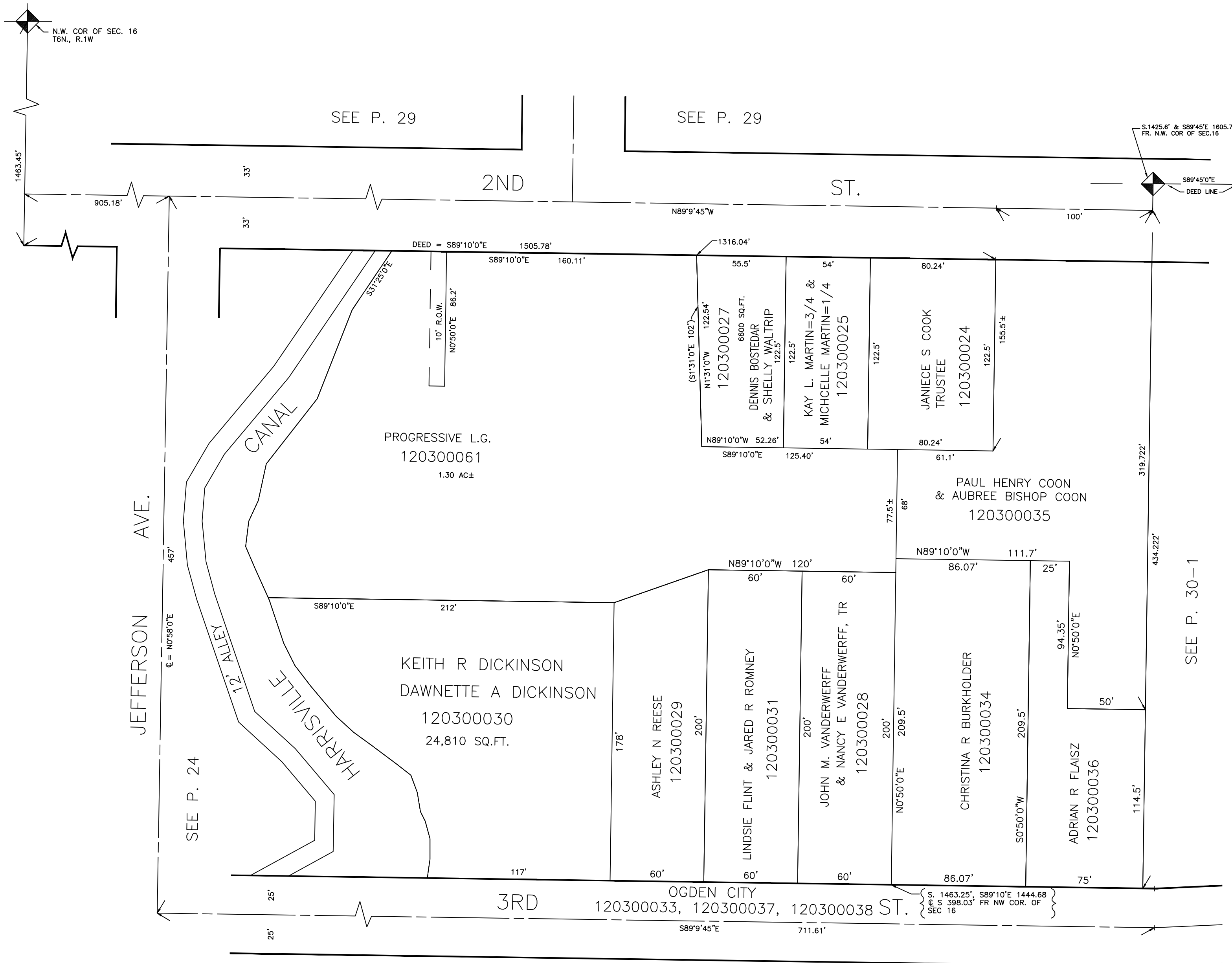


PART OF THE N.W. 1/4 OF  
SECTION 16, T.6N.,R.1W., S.L.B.&M

30-2

TAXING UNIT: 25

IN OGDEN CITY  
SCALE 1" = 50'



N.W. COR OF SEC. 16  
T6N., R.1W

S.1425.6' & S89°45'E 1605.78'  
FR. N.W. COR OF SEC.16

SEE P. 30-1

SEE P. 30